

**Anti-PRLR / Prolactin Receptor Reference Antibody (BAY 1158061)  
Recombinant Antibody  
Catalog # APR10532****Specification**

---

**Anti-PRLR / Prolactin Receptor Reference Antibody (BAY 1158061) - Product Information**

Application	FC, Kinetics, Animal Model
Primary Accession	<a href="#">P16471</a>
Reactivity	Human, Mouse
Clonality	Monoclonal
Isotype	IgG1
Calculated MW	150 KDa

**Anti-PRLR / Prolactin Receptor Reference Antibody (BAY 1158061) - Additional Information****Target/Specificity**

PRLR / Prolactin Receptor

**Endotoxin**

&lt; 0.001EU/ µg,determined by LAL method.

**Conjugation**

Unconjugated

**Expression system**

CHO Cell

**Format**

Purified monoclonal antibody supplied in PBS, pH6.0, without preservative.This antibody is purified through a protein A column.

**Anti-PRLR / Prolactin Receptor Reference Antibody (BAY 1158061) - Protein Information****Name** PRLR**Function**

This is a receptor for the anterior pituitary hormone prolactin (PRL). Acts as a prosurvival factor for spermatozoa by inhibiting sperm capacitation through suppression of SRC kinase activation and stimulation of AKT. Isoform 4 is unable to transduce prolactin signaling. Isoform 6 is unable to transduce prolactin signaling.

**Cellular Location**

Membrane; Single-pass type I membrane protein

**Tissue Location**

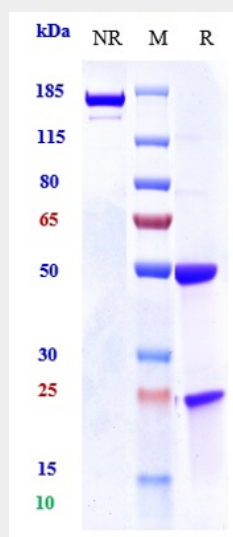
Expressed in breast, placenta, kidney, liver and pancreas.

## Anti-PRLR / Prolactin Receptor Reference Antibody (BAY 1158061) - Protocols

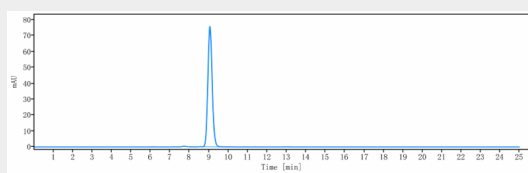
Provided below are standard protocols that you may find useful for product applications.

- [Western Blot](#)
- [Blocking Peptides](#)
- [Dot Blot](#)
- [Immunohistochemistry](#)
- [Immunofluorescence](#)
- [Immunoprecipitation](#)
- [Flow Cytometry](#)
- [Cell Culture](#)

## Anti-PRLR / Prolactin Receptor Reference Antibody (BAY 1158061) - Images



Anti-PRLR / Prolactin Receptor Reference Antibody (BAY 1158061) on SDS-PAGE under reducing (R) condition. The gel was stained with Coomassie Blue. The purity of the protein is greater than 90%



The purity of Anti-PRLR / Prolactin Receptor Reference Antibody (BAY 1158061) is more than 95%, determined by SEC-HPLC.